



Personal Computer Checklist (Internet Explorer - .0)

RealPage, Inc.
Release 3.0, R}^ 20FF
Doc ID FI 00GE

IMPORTANT NOTICE:

YOUR USE OF THESE MATERIALS SHALL BE DEEMED TO CONSTITUTE YOUR AGREEMENT THAT SUCH USE SHALL BE GOVERNED BY THE MUTUAL NON-DISCLOSURE PROVISIONS OF YOUR *PRODUCT CENTER USE AGREEMENT*.

Notification

All documentation, source programs, object programs, procedures, and any other material supplied in connection therewith remain the exclusive property of RealPage, Inc., or, in certain cases, its licensees. Any use or copying of such materials not specifically authorized by the license agreement shall be deemed a violation of the agreement. Such a violation will terminate the licensee's right to use such material and may render the licensee liable for both actual and punitive damages. This notification constitutes part of the documentation and accordingly may not be removed therefrom.

© 2011 RealPage, Inc. All rights reserved.

Printed in the United States of America

All other brands and product names are trademarks or registered trademarks of their respective owners.

Contents

Microsoft Internet Explorer 9.0 Configuration	1
Internet Options	2
Temp Files.....	3
Stored Pages and Disk Space	5
Trusted Sites	7
Security Level for Trusted Sites Zone	9
Privacy.....	12
Pop-up Blocker	13
Close Internet Explorer	15
Personal Computer Configuration	17
Display Settings	17
Pop-up Blockers	23

CHAPTER 1

Microsoft Internet Explorer 9.0 Configuration

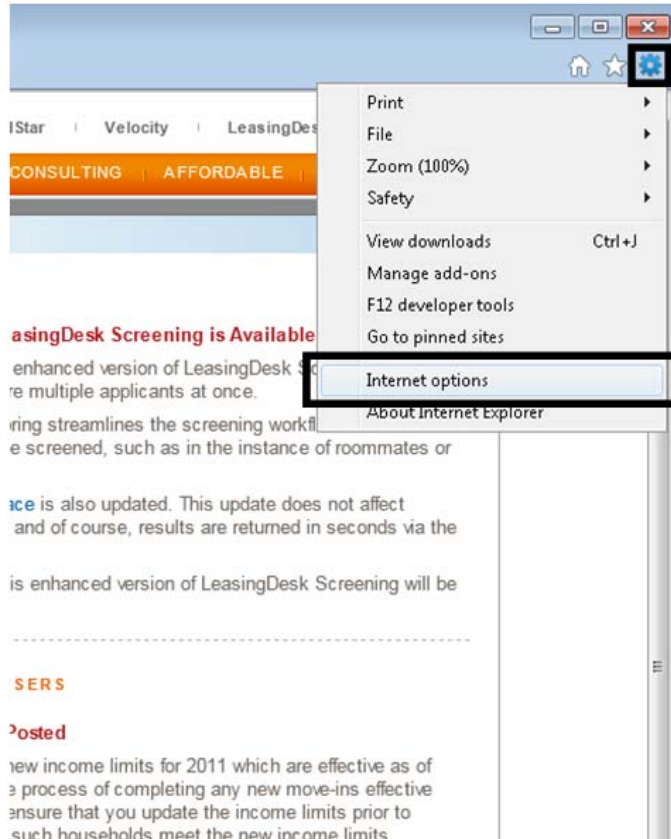
This chapter details each of the settings needed for Internet Explorer 9.0 to work with OneSite.

In This Chapter

Internet Options	2
Temp Files	3
Stored Pages and Disk Space	5
Trusted Sites	7
Security Level for Trusted Sites Zone	9
Privacy	12
Pop-up Blocker	13
Close Internet Explorer	15

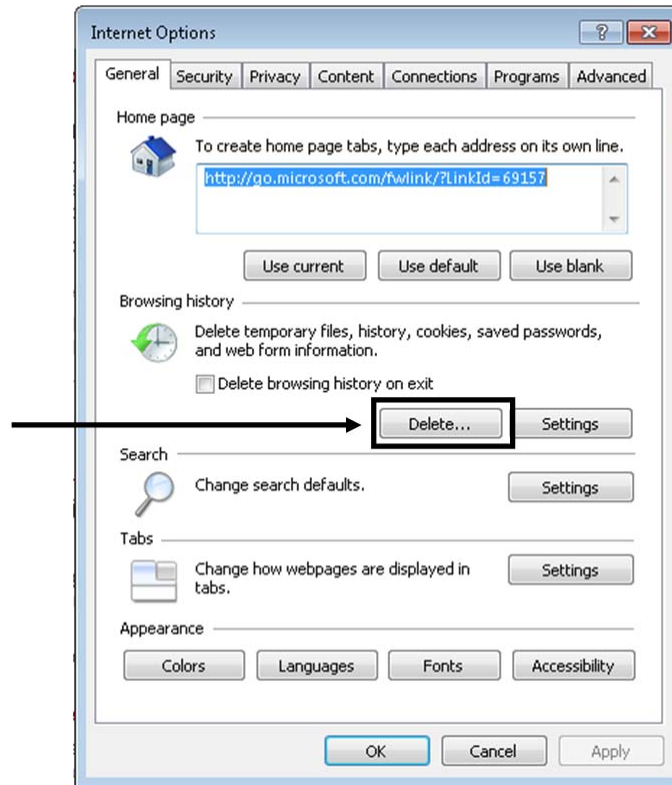
Internet Options

There are several options for Internet Explorer that must be set properly in order for you to use OneSite. To begin, open Internet Explorer, click the **Tools** menu, and select **Internet options**.

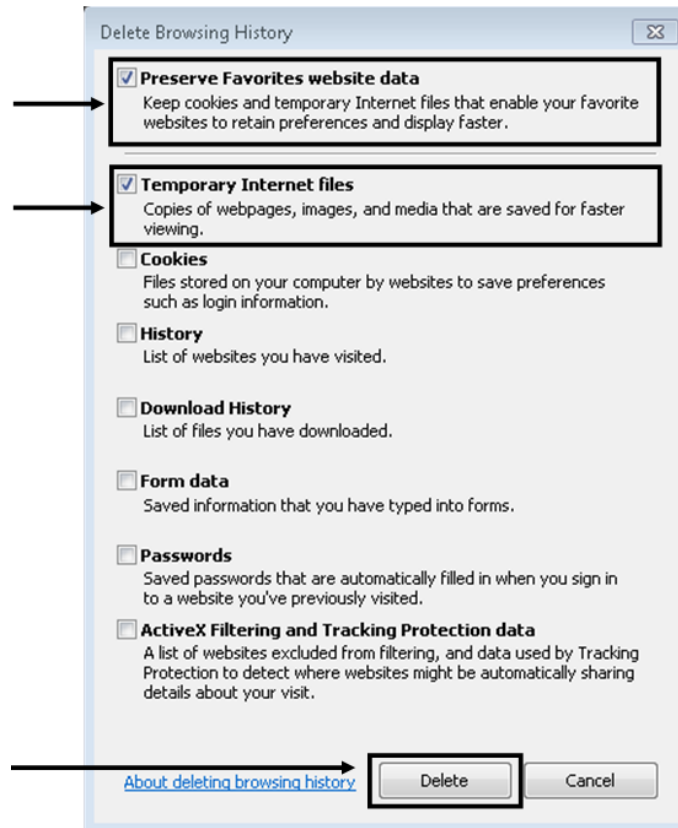


Temp Files

1. From the **General** tab, click the **Delete** button.



2. Select **Preserve Favorites website data** and **Temporary Internet files**. You may select other available selections, but it is not necessary for OneSite.
3. Click the **Delete** button. The process only deletes temporary Internet files, not personal or program files, and may take more than a minute.

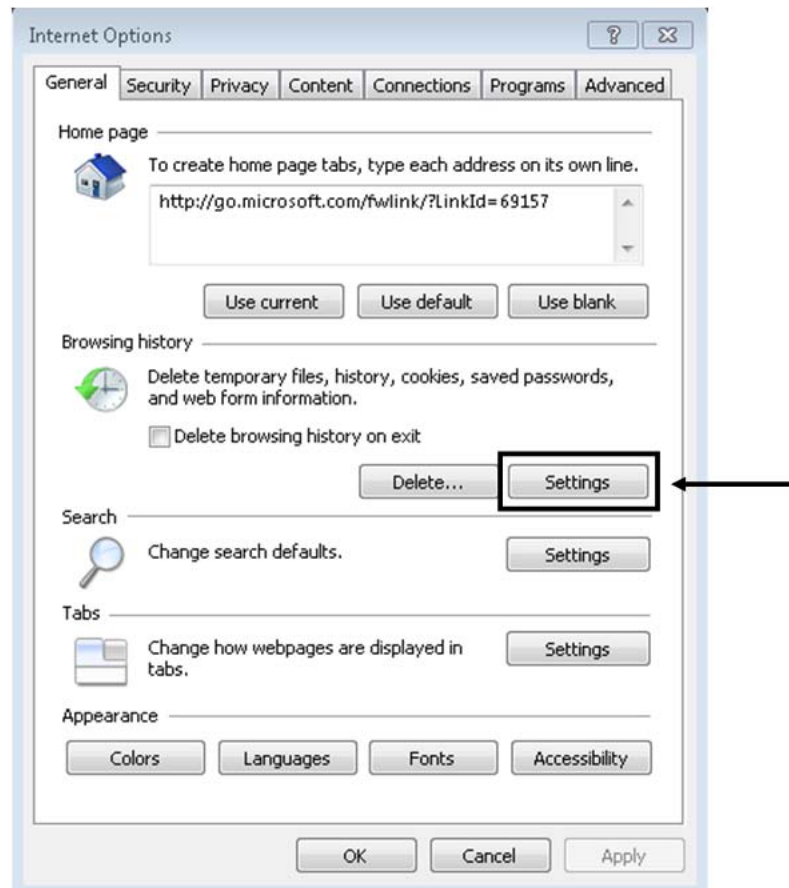


A system message will appear at the bottom of the browser to inform you when the process is complete.

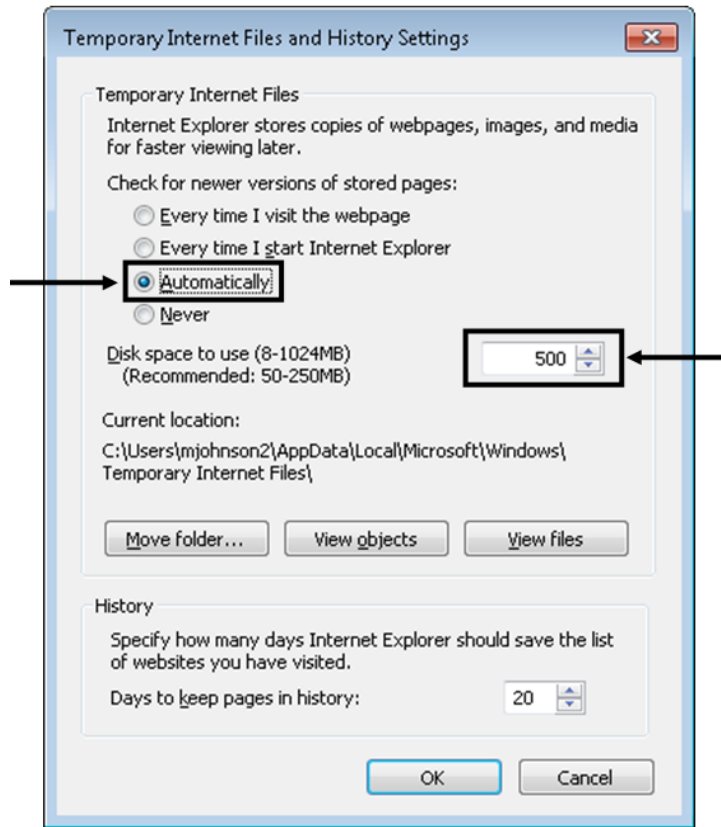


Stored Pages and Disk Space

1. Still on the **General** tab, click the **Settings** button to access the stored pages and disk space options.



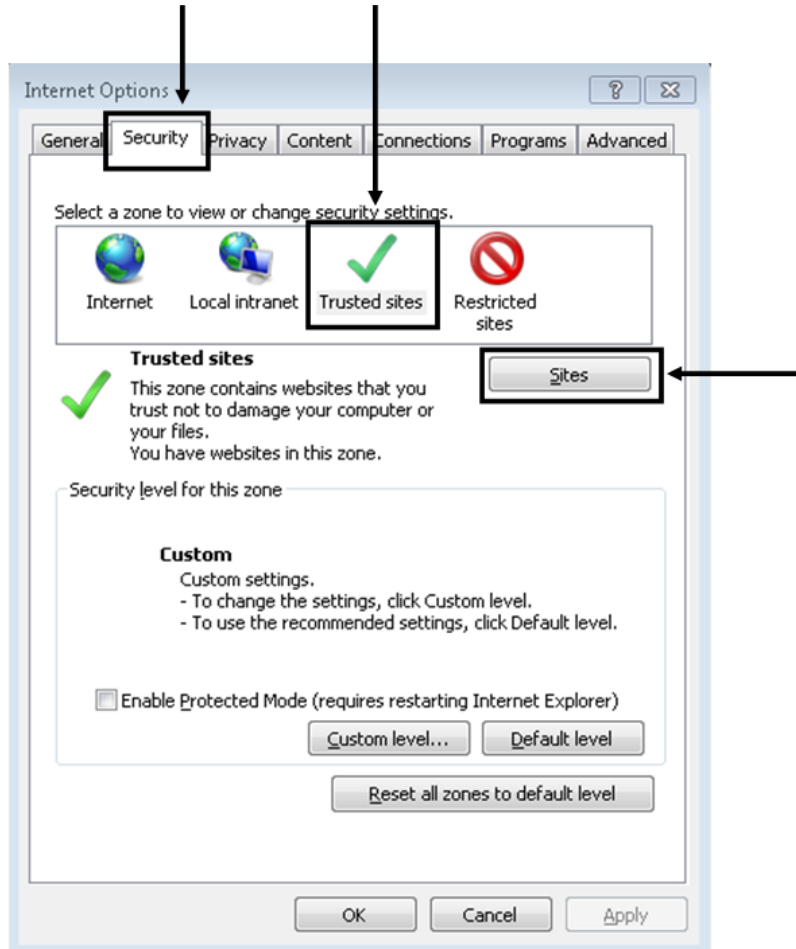
2. Select the option to check for newer versions of stored pages **Automatically**.
3. Adjust the amount of disk space to use for temporary Internet files to a minimum of 500 MB. It is recommended to make the size larger, if possible.



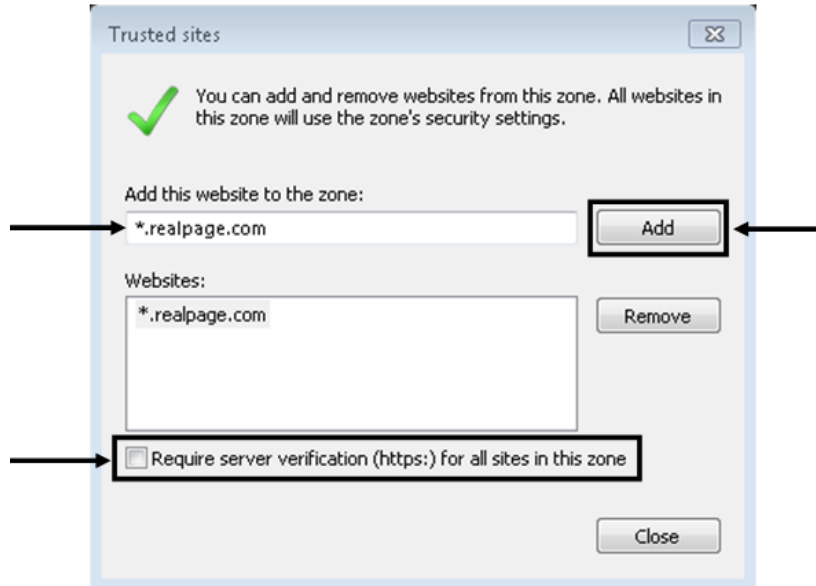
4. Click **OK** to save these settings.

Trusted Sites

1. Click the **Security** tab.
2. Click the **Trusted sites** icon as the Web content zone you wish to define.
3. Then, click the **Sites** button.



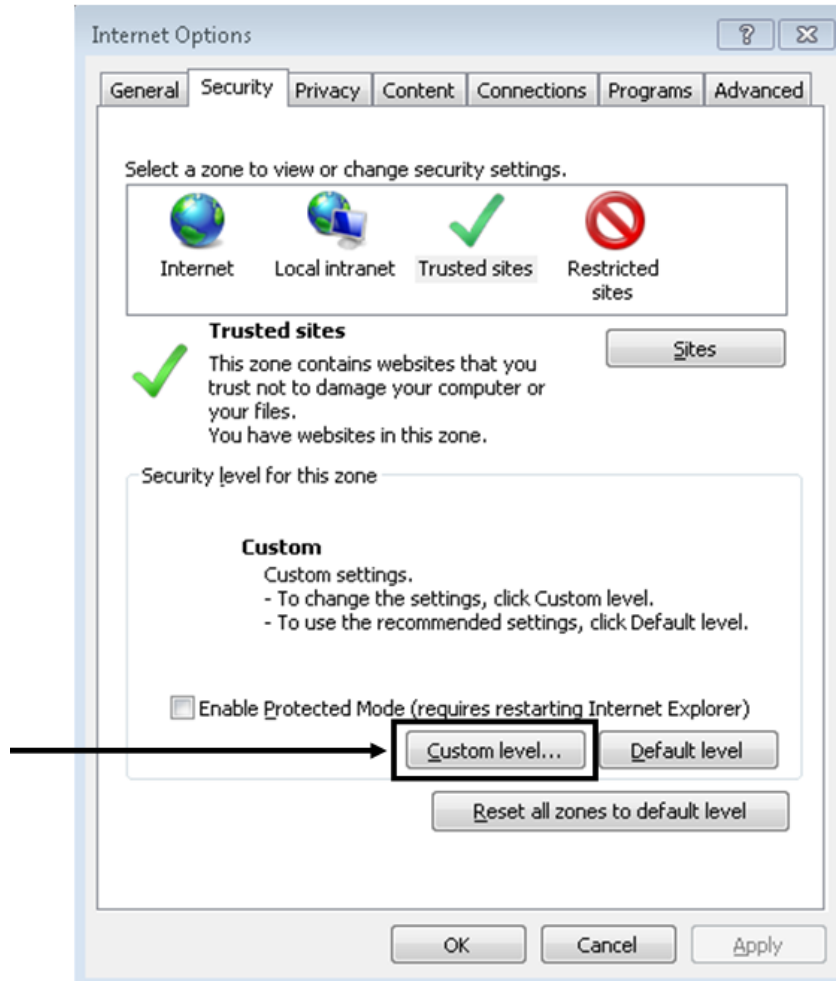
4. At the **Trusted sites** page, remove the check mark from the option to **Require server verification (https:) for all sites in this zone**.
5. Enter *.realpage.com in the **Add this website to the zone** field, and click the **Add** button. The entry is added to the **Websites** list.



6. Click **Close** to return to the **Security** tab.

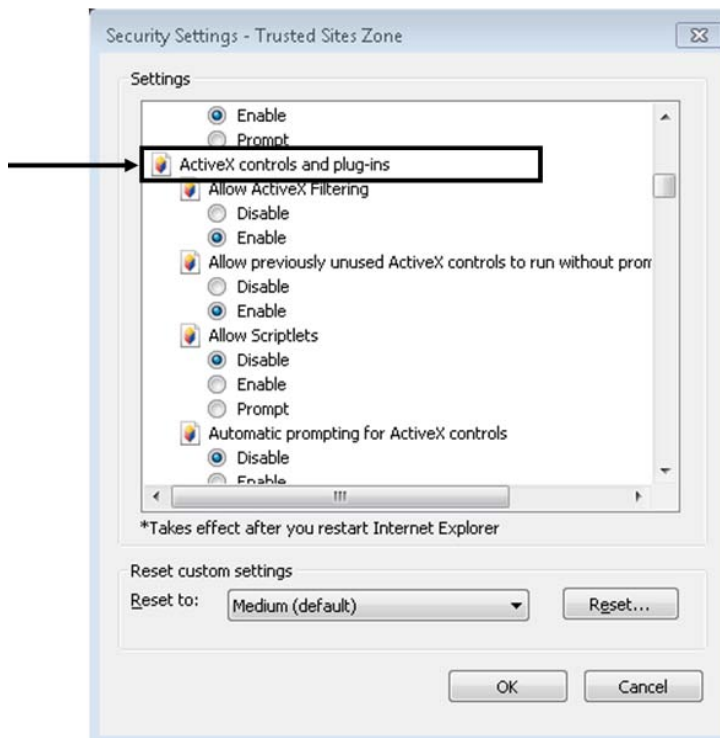
Security Level for Trusted Sites Zone

1. Confirm that **Trusted sites** is still selected as the zone that you are working with.
2. Click the **Custom level** button in the *Security level for this zone* section.



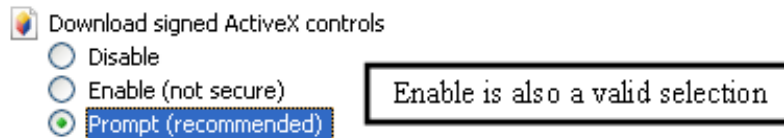
3. **Locate ActiveX controls and plug-ins.**

Each ActiveX option has this icon  beside it, and all ActiveX controls are grouped together.

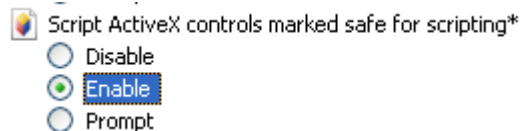


4. Set the two following ActiveX options as shown below.

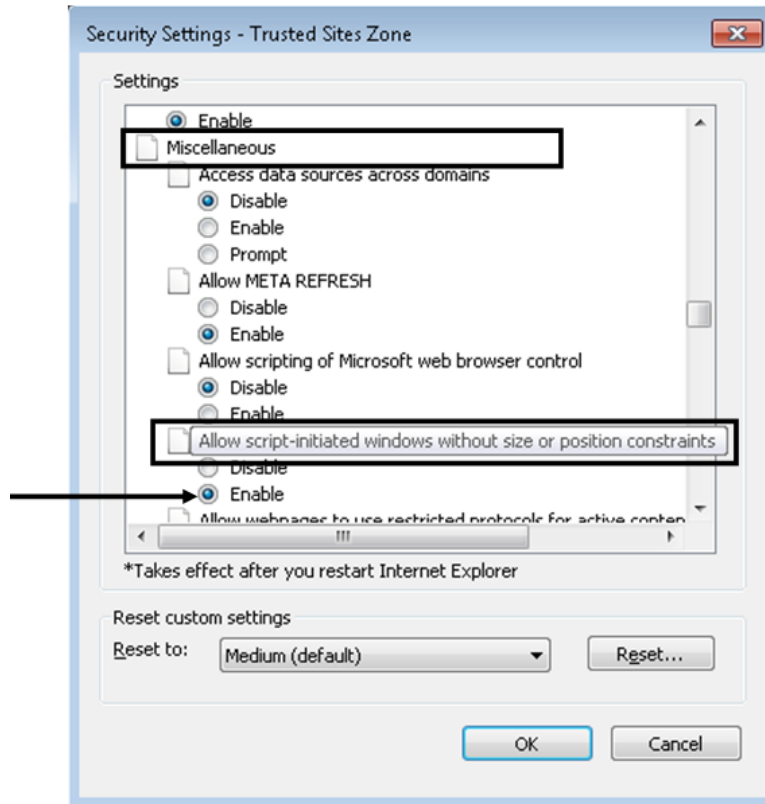
Option #1:



Option #2:



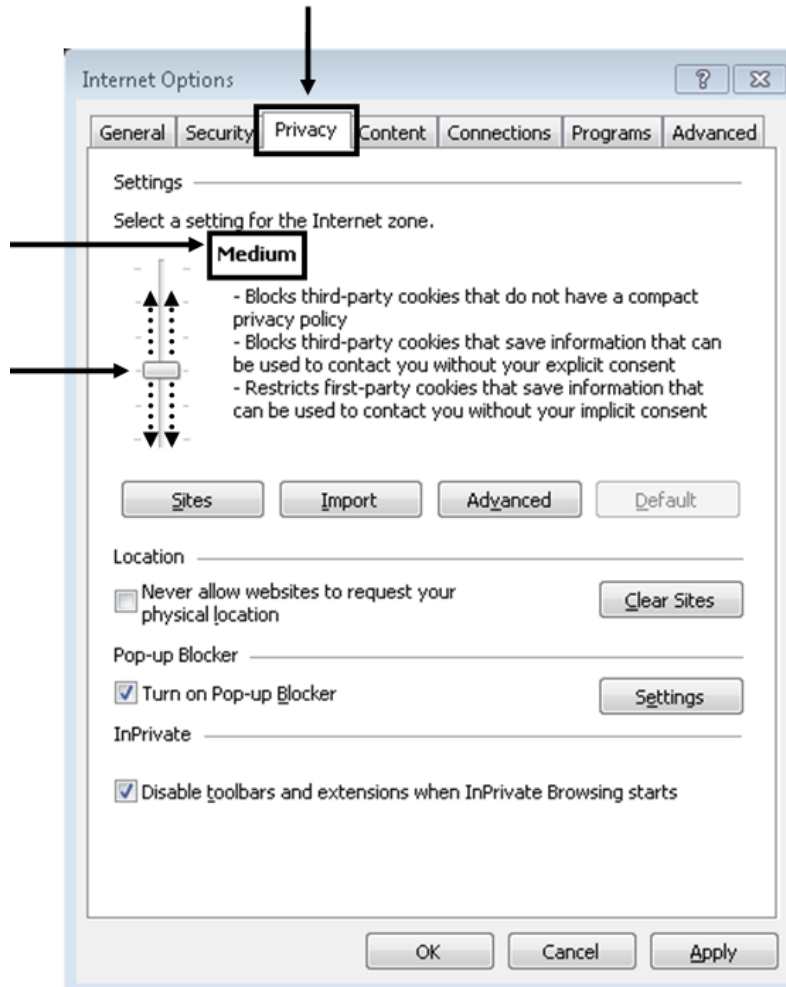
5. On the same page, locate the *Miscellaneous* section. Select **Enable** for the option to **Allow script-initiated windows without size or position constraints**.



6. Click the **OK** button to save these settings and return to the **Security** tab.

Privacy

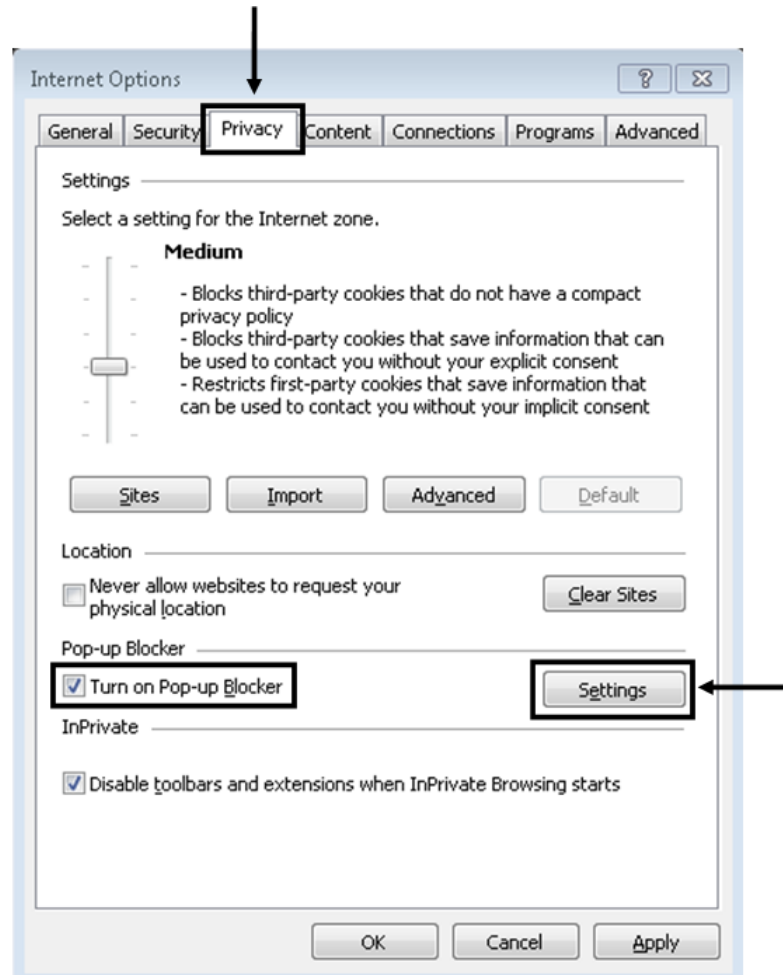
Select the **Privacy** tab and move the slider bar to **Medium** (or lower) setting.



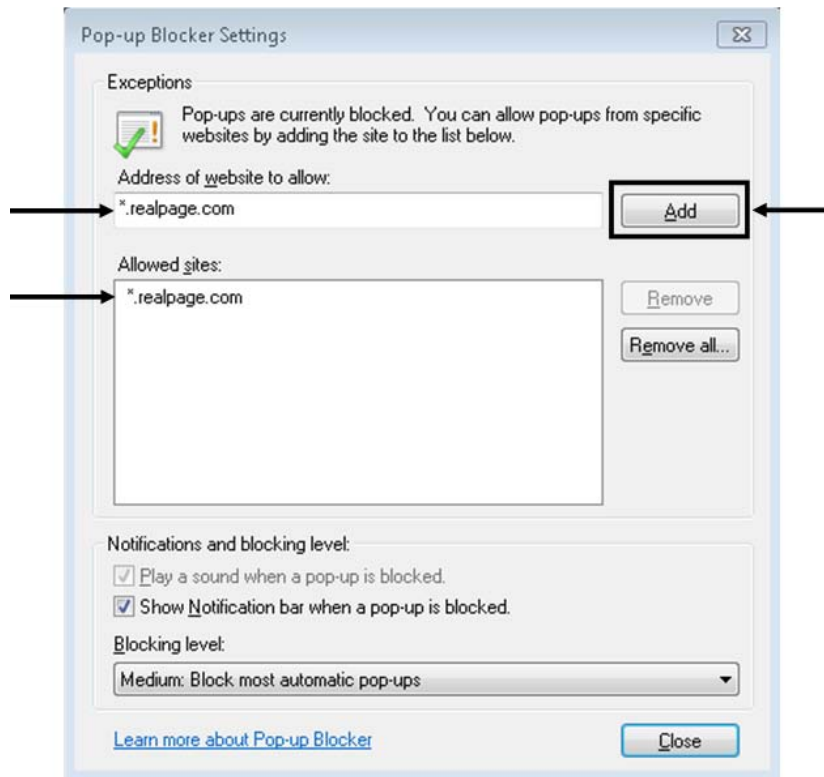
Pop-up Blocker

OneSite requires that pop-up windows not be blocked on your personal computer. You can choose to disable pop-up blocking completely OR you can configure Internet Explorer to allow RealPage to have pop-ups while blocking other pop-ups.

1. While on the **Privacy** tab, make sure that the option to **Turn on Pop-up Blocker** is selected.
2. Click the **Settings** button.



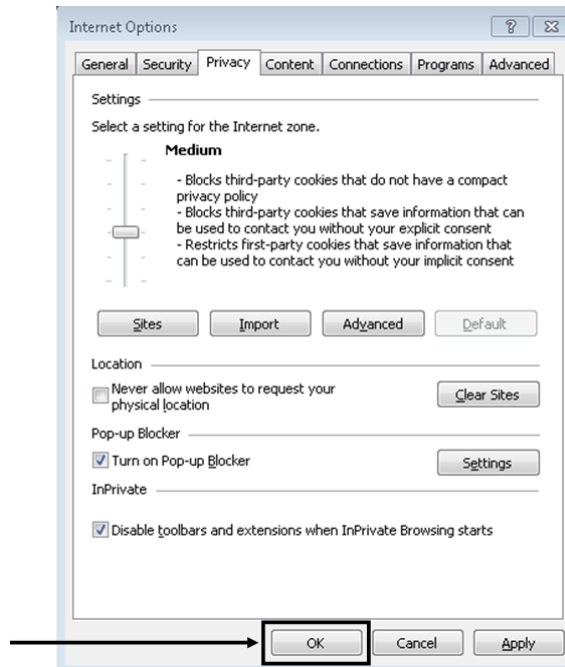
3. Enter *.realpage.com as the **Address of website to allow** and click the **Add** button. The entry is added to the **Allowed sites** list.



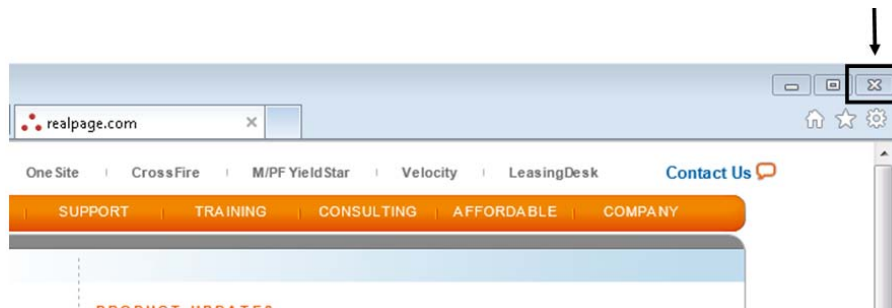
4. Click the **Close** button to save the change.

Close Internet Explorer

1. Click the **OK** button to save all the changes made and close the **Internet options**. (You can do this from any of the tabs.)



2. Close all Internet Explorer browser windows. (Internet Explorer cannot start using some of the changes until all active windows have been closed.)



If you have completed all the settings changes, you can now open Internet Explorer and begin using OneSite.

CHAPTER 2

Personal Computer Configuration

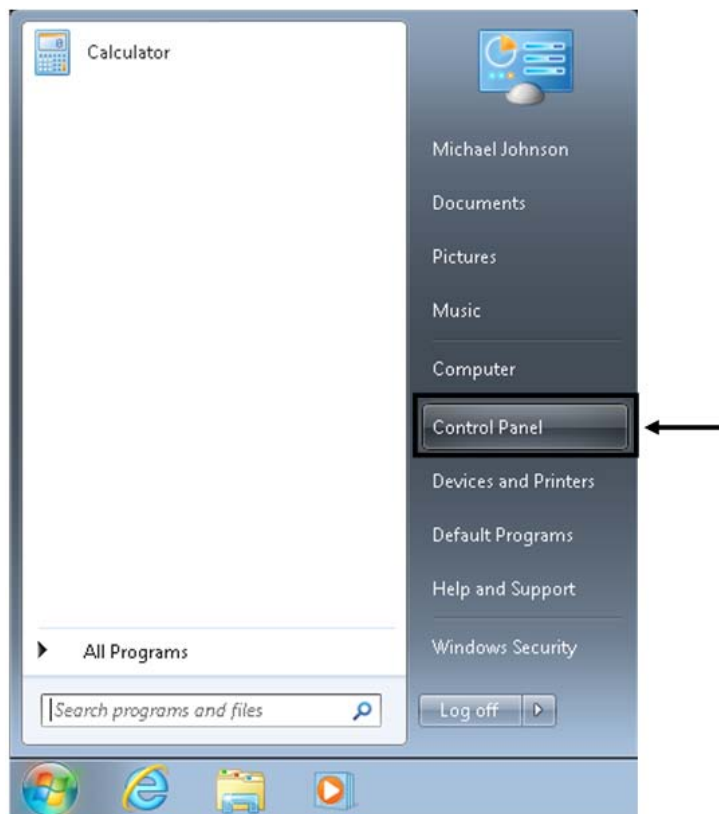
This chapter details each of the personal computer settings required when using Microsoft Windows 7 with OneSite.

In This Chapter

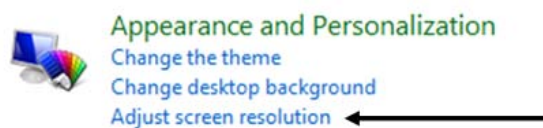
Display Settings	17
Pop-up Blockers.....	23

Display Settings

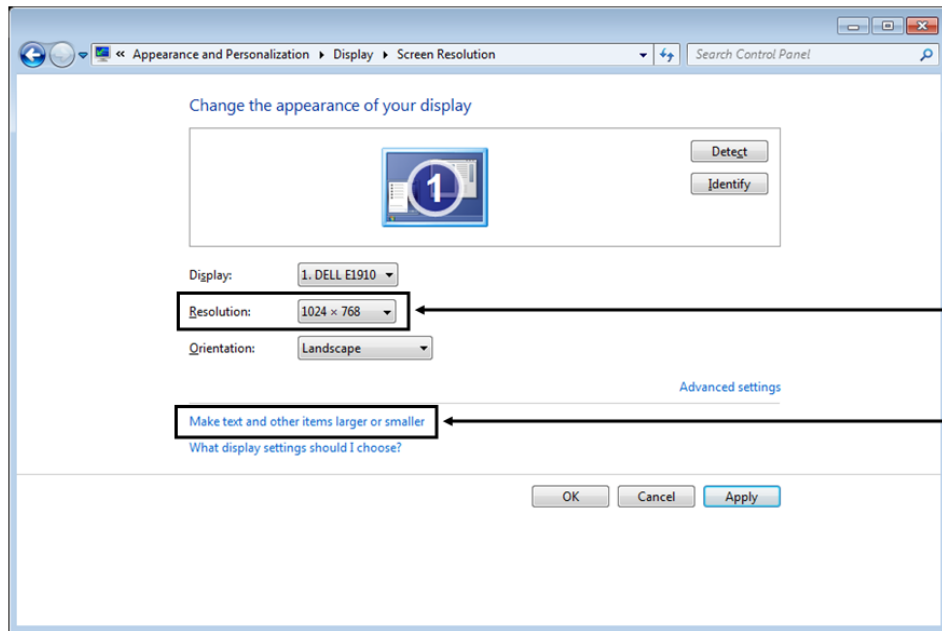
1. Click **Start** and then select the **Control Panel**.



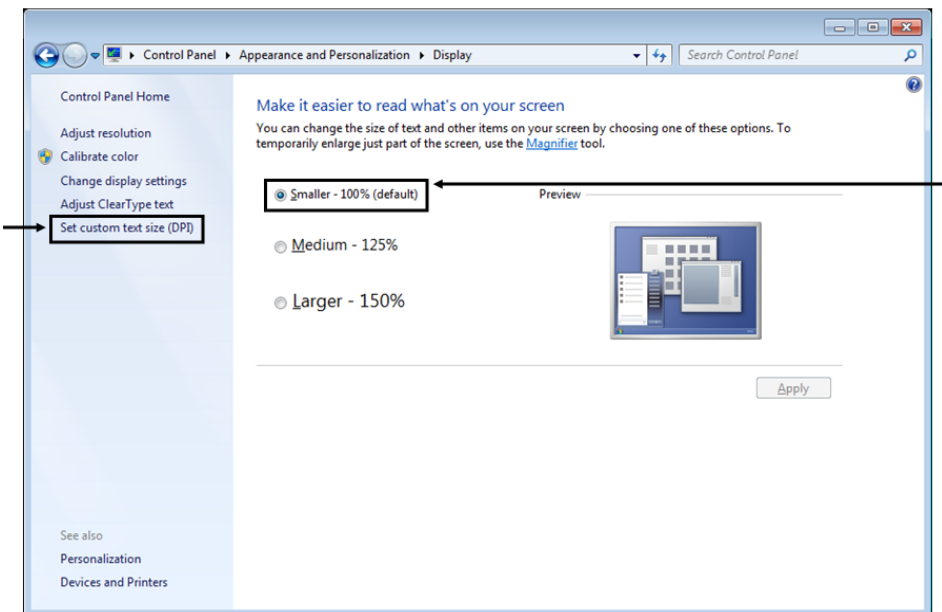
2. Under **Appearance and Personalization**, select the task **Adjust screen resolution**.



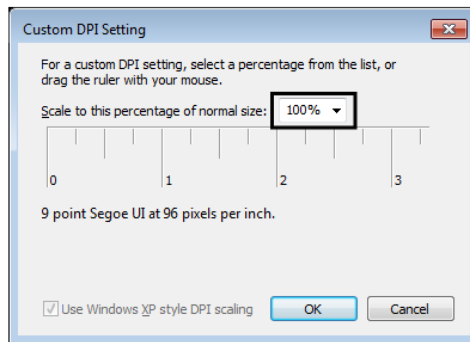
3. On the **Settings** tab, use the drop-down list to set the screen **Resolution** to the required OneSite setting of at least 1024 x 768 pixels. Then, click the **Make text and other items larger or smaller** link on the same page.



4. On the **Make it easier to read what's on your screen** page, make sure the setting is set to **Smaller – 100% (Default)**. Next, select **Set custom text size (DPI)** from the navigation panel on the left.



5. Set the **Percentage of normal size** to 100%.



Selecting a larger or custom size results in missing text, and possibly misplaced buttons.

6. Click the **OK** button to save these changes and close the **Custom DPI setting** box.
7. Click the **Apply** button and close the window by clicking the 'X' in the upper-right corner.
8. Close the **Control Panel**.

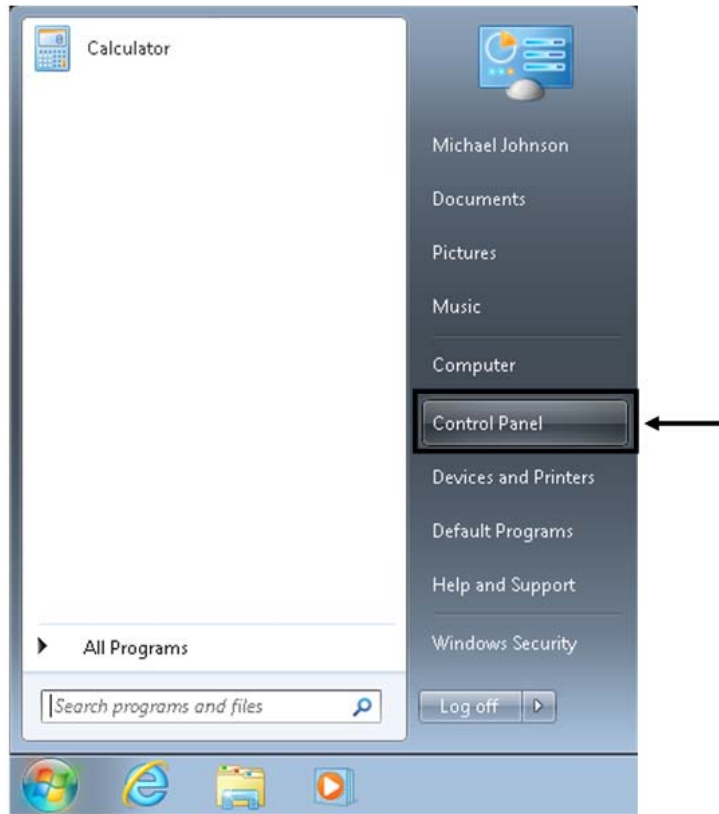
Pop-up Blockers

OneSite takes advantage of the pop-up functionality allowed by Internet Explorer. Due to spyware and viruses that also use pop-up windows to infect personal computers, there is a lot of pop-up blocking software being used on personal computers. Although RealPage does encourage security, OneSite requires the use of pop-up windows. In most cases, you can configure your pop-up blocking programs to allow trusted web sites to have pop-up windows.

Anti-virus software, anti-spyware, and toolbar programs are the most common software to contain pop-up blockers. If you want to use any of these types of software, please contact the program vendors for instructions on how to configure their pop-up blocker to allow *.realpage.com to have pop-up windows.

If the program which is blocking OneSite from using pop-up windows is not a program you want to use on your personal computer, you can uninstall the program using the following steps.

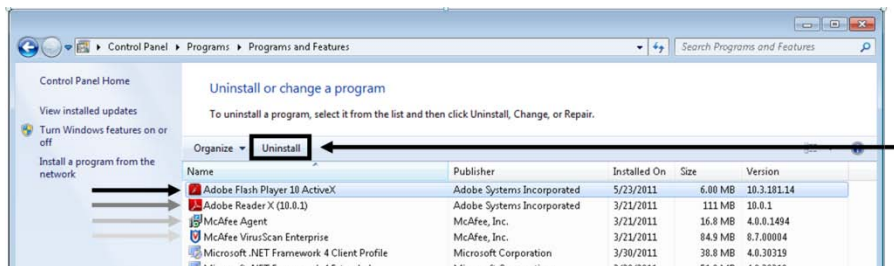
1. Click **Start** and **Control Panel**.



2. Select **Uninstall a program** from the list.



3. Select the program you wish to remove in the list and click the **Uninstall** button.



4. Follow the on-screen prompts until the program has been removed.
5. Close the **Add or Remove programs** window.
6. Close the **Control Panel**.

